

NATIONAL STATE OF WATER

Report Highlights 2023



A warming trend of
Approximately
0.17 °C
per decade since 1951



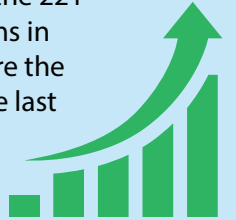
8%

of South Africa's land surface

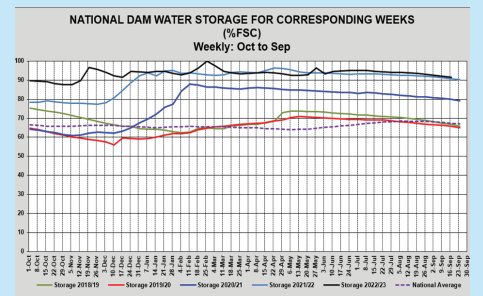


Dam levels for the 221 national dams in HY 2022/23 are the highest in the last

5
Years

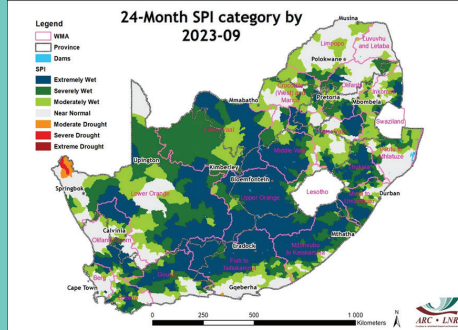
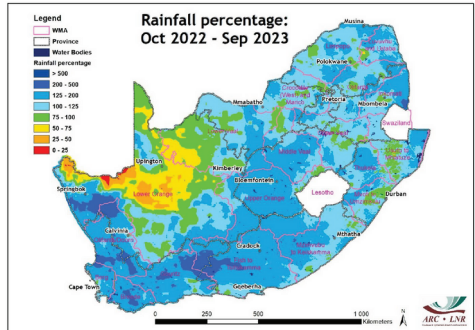


Dam levels

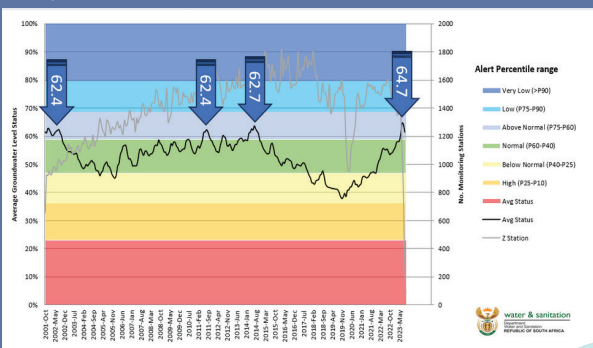


Rainfall

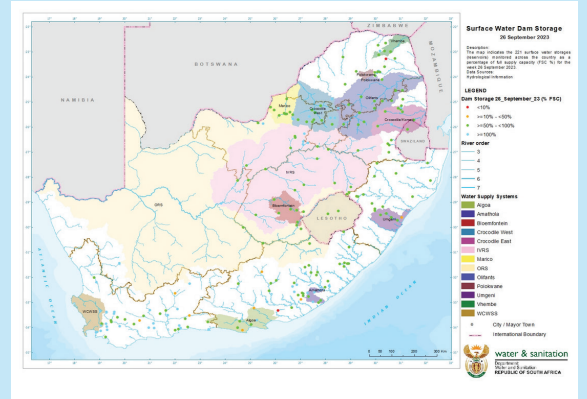
Drought status



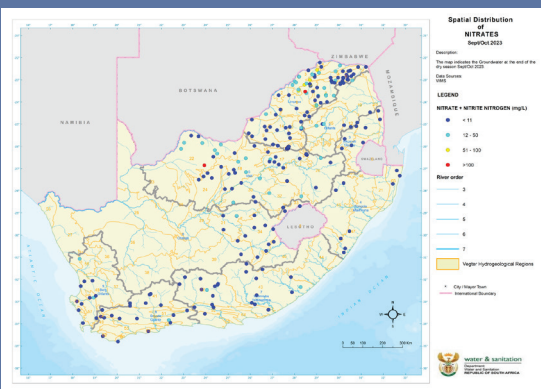
Groundwater levels



High Nitrates found in GW in Limpopo & Vaal WMAs

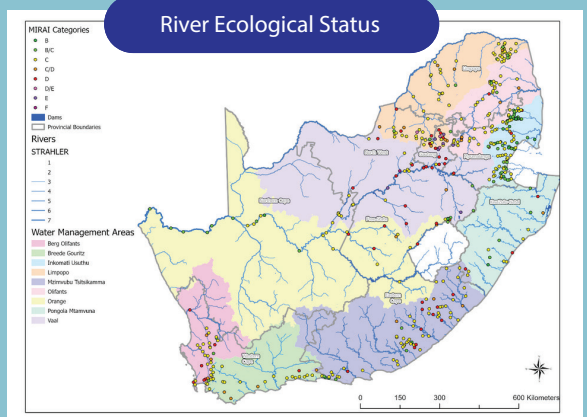


Groundwater quality



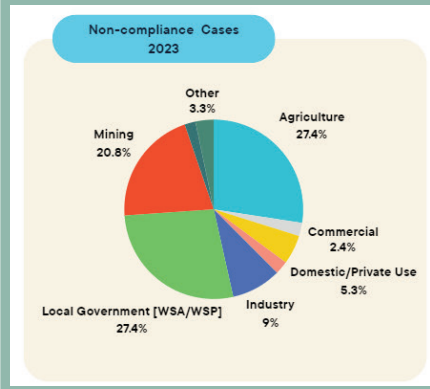
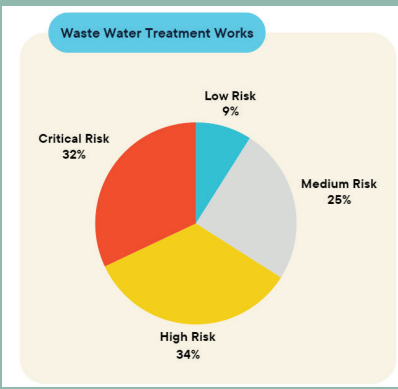
Ecological Status ~60% of the sites are moderately modified **MIRAI**

Surface water quality



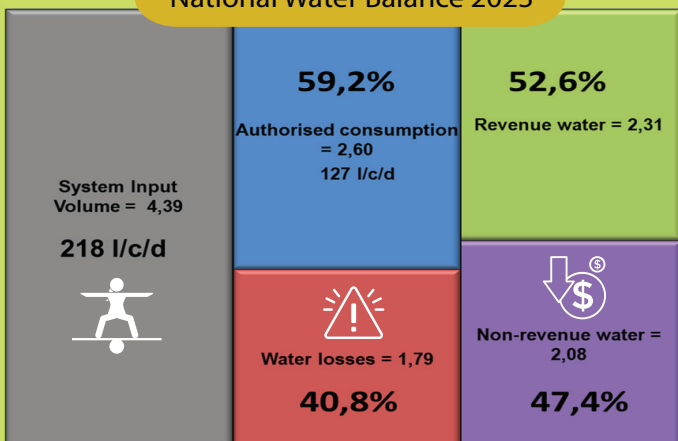
Waste Water Management

Enforcement

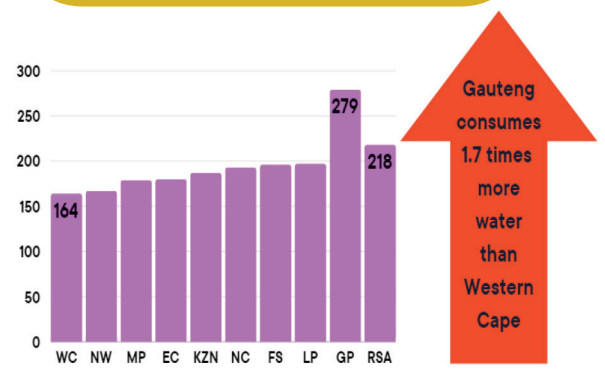


Water Use Efficiency

National Water Balance 2023



Water consumption (l/c/d) 2023



Gauteng consumes 1.7 times more water than Western Cape